



Tech Tip

Maximo Locate Field and Table Names

Products: Maximo 7.5.0.3

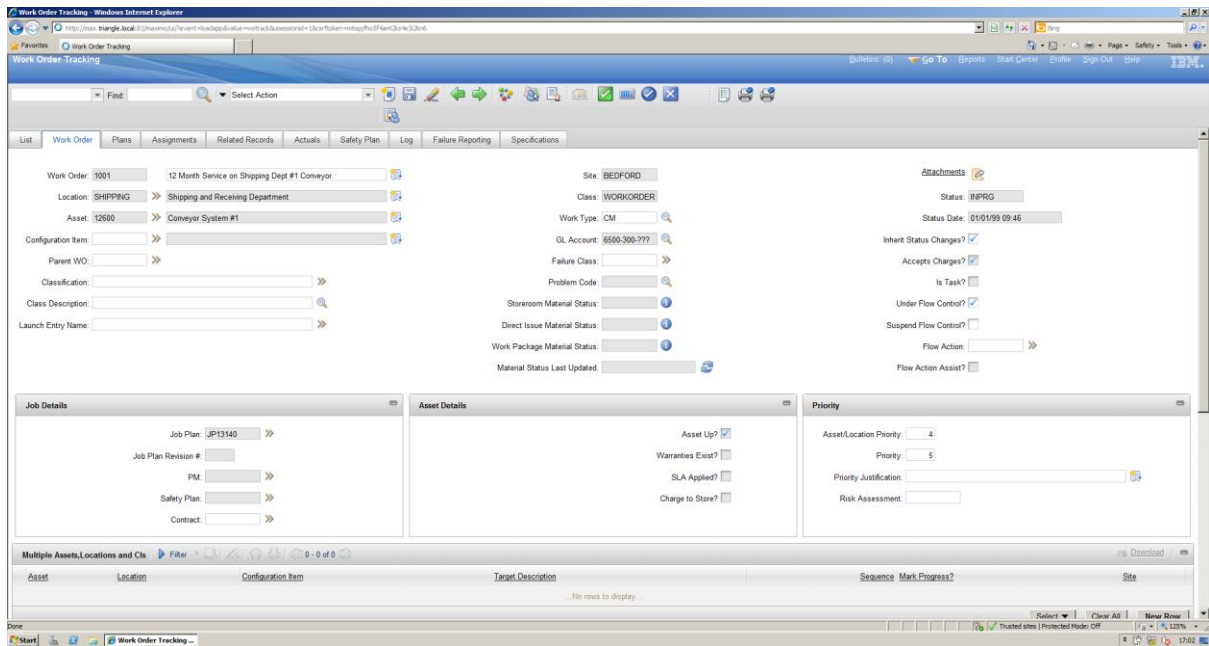
Document Number: TRI-MAX-D-002

Overview

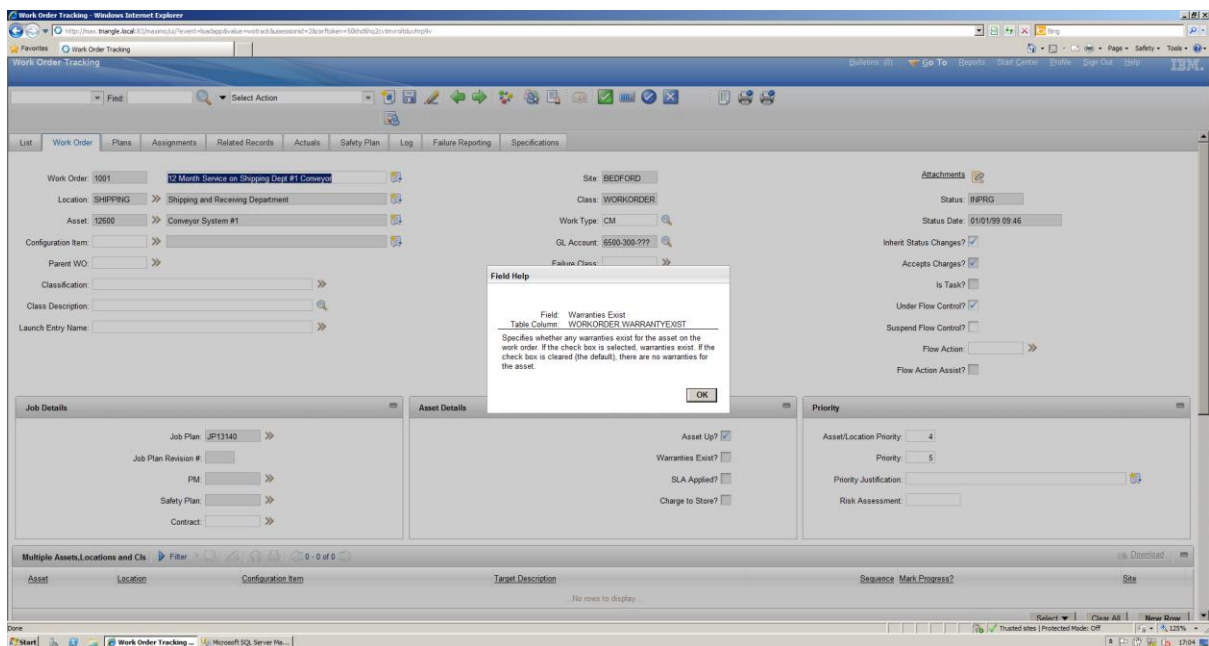
This document identifies how to find out where a field in the Maximo application comes from and how to identify what the field is called.

Instructions:

1. Log into Maximo and navigate to the area of the application that you are interested in i.e. Work Order Tracking



2. Locate the field within Maximo and click in the field
3. Click ALT + F1 to see what table the field comes from and the field name.



Field Help

Field: Warranties Exist
Table.Column: WORKORDER.WARRANTYEXIST

Specifies whether any warranties exist for the asset on the work order. If the check box is selected, warranties exist. If the check box is cleared (the default), there are no warranties for the asset.

OK