

2012



**TRIANGLE INFORMATION MANAGEMENT LIMITED**

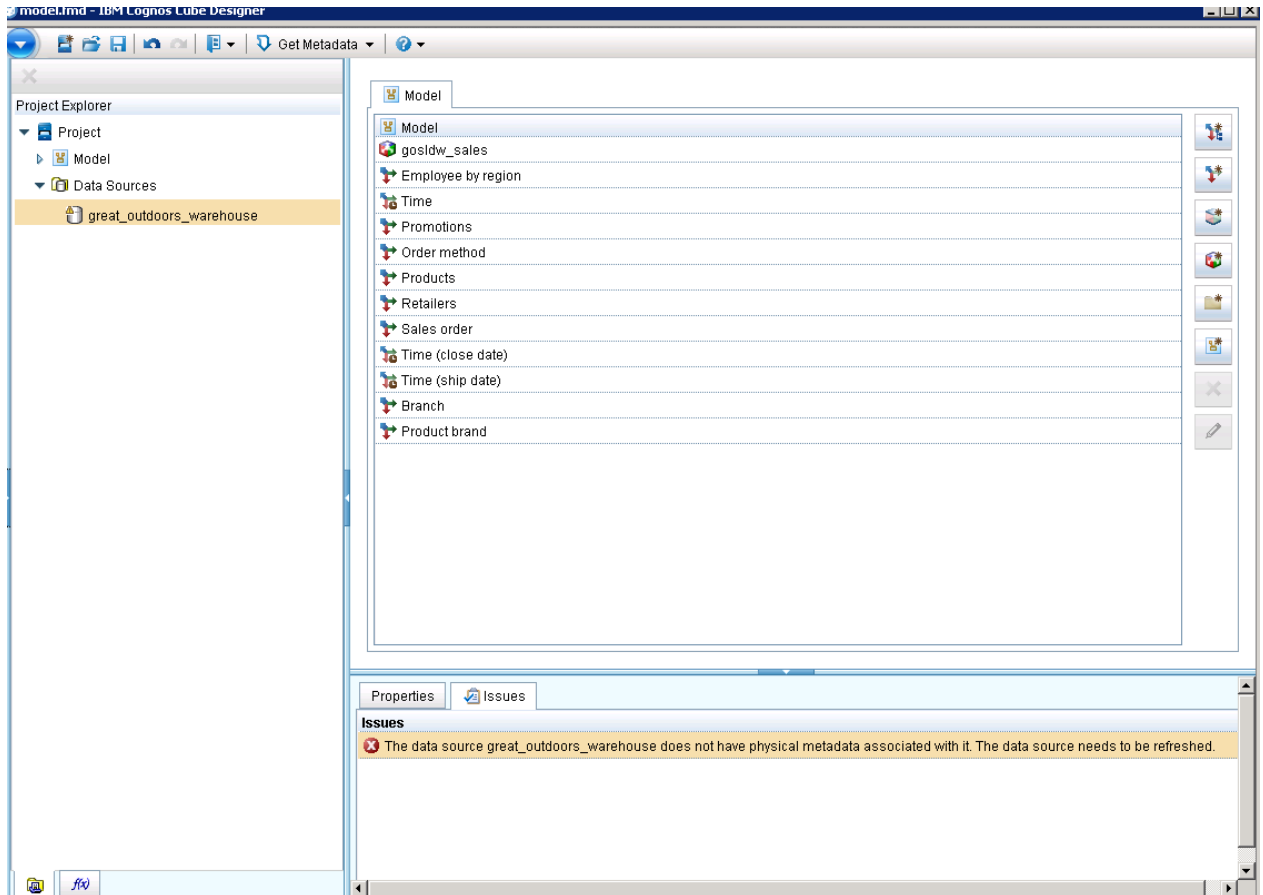
**COGNOS 10.2 Dynamic Cube Designer**

**Resolving “jdbcDriverNotFound” error message when testing  
Datasources, great\_outdoors\_warehouse**

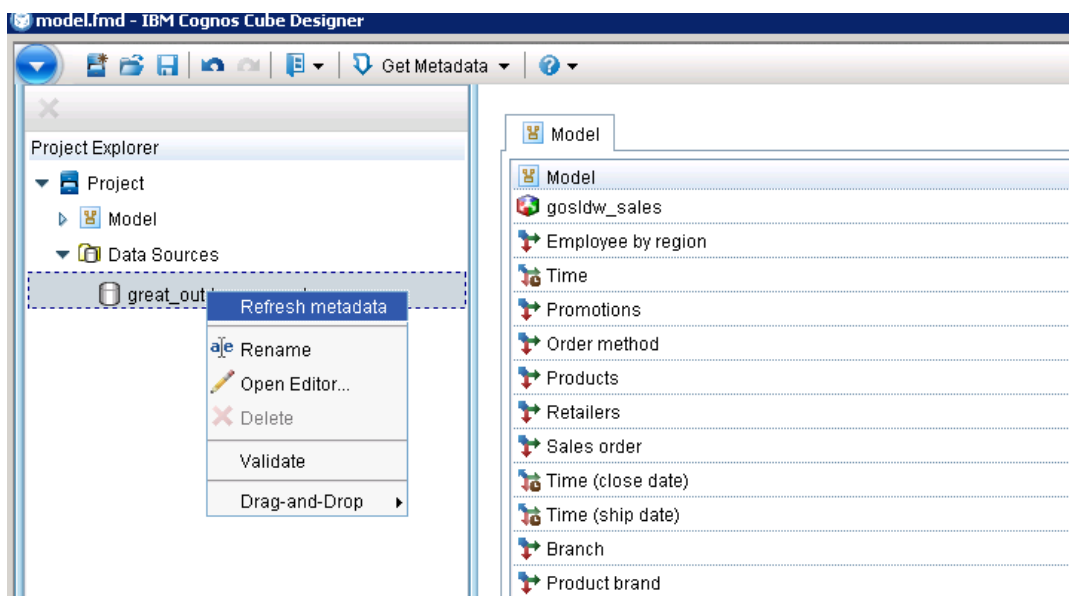
The Tythe Barn  
Stapeley Manor, Long Lane  
Odiham  
Hampshire  
RG29 1JE

Users experienced “JDBCDriverNotFound” error message when opening sample cube model in IBM Cube Designer. Sample cube model can be found in c10.2installation/webcontent/samples/models/great\_outdoors\_dynamiccube/sqlserver/model.fmd.

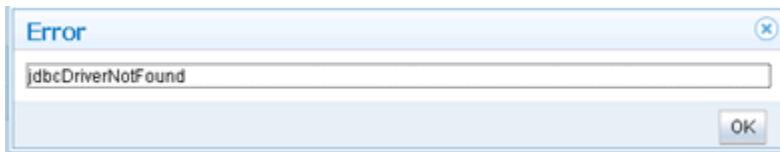
Users may see warning exclamation sign in 32 bit environment and no warning sign in 64 bit environment.



To determine the JDBC issue please right click on datasources and Refresh Metadata.



Following error message is returned.



To overcome this issue users need to download JDBC4 zipped file from Microsoft website <http://www.microsoft.com/en-gb/download/details.aspx?id=11774> and unzip downloaded file.

- 1> In the Microsoft SQL Server JDBC driver directory, locate and copy the **sqljdbc4.jar** and **sqljdbc\_auth.dll** file to the **c10.2\_installation\webapps\p2pd\WEB-INF\lib** and **c10.2\_installation\v5dataserver\lib** directory.

C:\JDBC\sqljdbc\_3.0\enu\sqljdbc4.jar

C:\JDBC\sqljdbc\_3.0\enu\auth\x86\sqljdbc\_auth.dll

- 2> Locate c10.2\_installation\v5dataserver and find the databaseDriverLocations.properties.sample file.
- 3> Please rename databaseDriverLocations.properties.sample file and to databaseDriverLocations.properties.
- 4> In a text editor, open the renamed databaseDriverLocations.properties file.
- 5> Set the databaseJNIPath property to the location of the sqljdbc\_auth.dll file.  
For example, databaseJNIPath= C:\\sqljdbc\enu\auth\x86;
- 6> Save the changes and close the file.
- 7> For changes to take effect, Stop and Restart the IBM Cognos service from Cognos Configuration.

Once users have successfully implemented these processes users can publish dynamic cube to the Cognos Connection.